

# Disability Access and Inclusion Plan

Rural City of Murray Bridge

Easy Read version



# Acknowledgement of Country



We recognise the Ngarrindjeri people as the First People of the land where we live and work.



They have always looked after Country.  
Country means the land, water, sky and everything within them.



We respect the important connection that Aboriginal peoples have with Country.



And we respect their Elders from the past and now.

## How to use this plan



We are the Rural City of Murray Bridge.

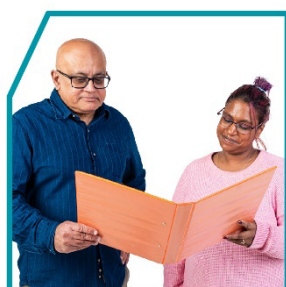
We wrote this plan.



We wrote some words in **bold**.

We explain what these words mean.

There is also a list of these words on page 29.



You can ask someone you trust for support to:

- read this plan
- find more information.



This is an Easy Read summary of another plan.

It only includes the most important ideas.



You can find the other plan on our website.

[www.murraybridge.sa.gov.au/services/your-community/disability-access-and-inclusion-plan](http://www.murraybridge.sa.gov.au/services/your-community/disability-access-and-inclusion-plan)

# What's in this plan?

What we want for the Rural City of Murray Bridge	5
About our plan	7
What we heard from people with disability	8
Who our plan needs to support	11
What our plan focuses on	14
1. Accessible and inclusive communities	16
2. Learning and work	20
3. Good supports and services	22
4. Better health and wellbeing	24
5. Safety and the justice system	26
How we will make sure our plan works	28
Word list	29
Contact us	33

# What we want for the Rural City of Murray Bridge



We want to make our community more **accessible** for people with disability.



When a community is accessible, it's easy to:

- find and use services
- move around.



We also want to make our community more **inclusive** for people with disability.



When a community is inclusive, everyone can:

- take part
- feel like they belong.

We want our community to be a place where everyone can:



- grow



- do well



- get the services they need



- live good and long lives.

# About our plan



There is a law in South Australia called the Disability Inclusion Act 2018 (SA).

We just call it the Act.



The Act says we need a Disability Access and Inclusion Plan.

We just call it our plan.



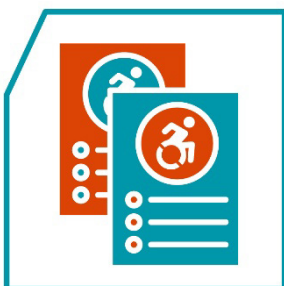
Our plan explains how we will make the Rural City of Murray Bridge more:

- accessible
- inclusive.



It explains what we will do:

- from 2025
- until 2029.



This is our second plan.

# What we heard from people with disability

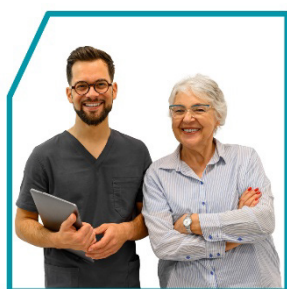


We asked the community what people with disability need.

We asked:



- people with disability



- carers



- support workers.

We heard that people with disability need more accessible:



- public transport



- information on our website



- footpaths



- bathrooms and places to change.



We also heard that people with disability need more chances to work and **volunteer** with the council.



When you volunteer, you:

- work but you don't get paid
- do work that helps the community.

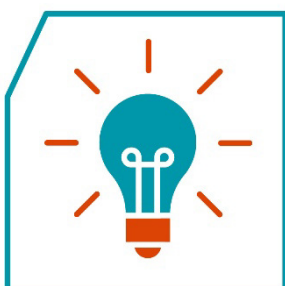
# Who our plan needs to support



We know that disability is just one part of people's lives.



Other things about a person also affect the type of support they need.



Our plan includes ideas to support 7 groups of people with disability.

These groups are also in the Act.



## 1. **Culturally and linguistically diverse (CALD)** people with disability

CALD people:

- come from different cultures and backgrounds
- speak languages other than English.



## 2. Aboriginal and Torres Strait Islander people with disability



## 3. Women with disability



## 4. Children with disability



## 5. **LGBTIQA+** people with disability



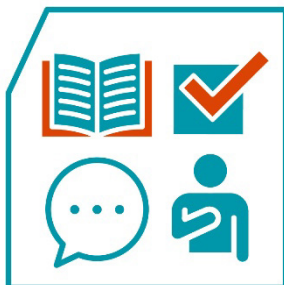
The letters LGBTIQA stand for lesbian, gay, bisexual, transgender, intersex, queer or questioning and asexual.

The '+' is for people who are part of the LGBTIQA+ community but don't talk about themselves using a word from this list.

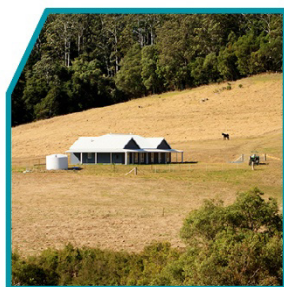


6. People with **intellectual disability** or who are more at risk because of their disability

An intellectual disability affects how you:



- learn new things
- solve problems
- communicate
- do things on your own.



7. People with disability who live far away from cities and towns

## What our plan focuses on



Our plan follows South Australia's State Disability Inclusion Plan 2025–2029.

We just call it the state plan.



Our plan includes 5 focus areas.



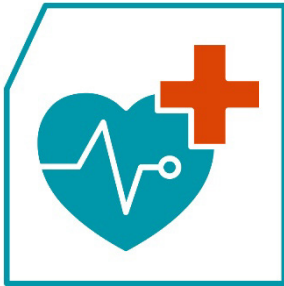
1. Accessible and inclusive communities



2. Learning and work



3. Good supports and services



4. Better health and wellbeing



5. Safety and the justice system



We explain what we will do on the following pages.

# 1. Accessible and inclusive communities



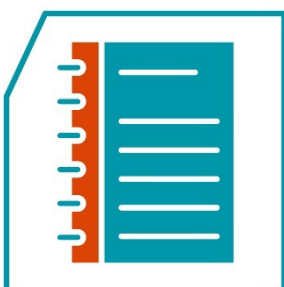
We want people to:

- celebrate what people with disability do for our community
- treat people with disability fairly.



This includes making sure people can get what they need from the community.

## What we will do

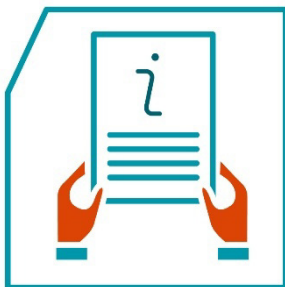


We will create guides to help people make events in our community more accessible.



We will run disability training for:

- Council Members
- our staff
- new volunteers.



We will share more information with the community about how to be more accessible and inclusive.



We will share this information in accessible ways.



We will make the buildings we own:

- feel safe
- more inclusive
- more accessible.



We will listen to Aboriginal and Torres Strait Islander peoples with disability.

This will help us make better decisions.



We will check how accessible spaces in our community are.

We will check:



- the buildings we own



- parks and playgrounds



- paths for walking and riding bikes



- public toilets.



We will also look into how we can create a Changing Places bathroom.

This is an accessible toilet with extra space and equipment to support people with disability.



We will keep working with people with disability to make the Rural City of Murray Bridge more:

- inclusive
- accessible.

## 2. Learning and work



We want to give all people a fair chance to:

- learn new skills
- work and earn money.



We want to fix issues that make these goals harder to reach for people with disability.

### What we will do



We will help more people with disability volunteer.



We will make it easier for people with disability to work for us.

This includes:



- giving people more ways to apply for a job



- supporting people in interviews



- working with job services.

### 3. Good supports and services



We want services in South Australia to focus on each person they help.

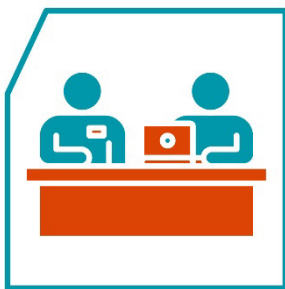


This includes focusing on what each person can do well.

#### What we will do



We will make it easier for people with disability to get the services they need.



We will work with providers and community services to do this.



We will share information on our website about different services people with disability can use.



We will work with other governments to make all of South Australia more:

- inclusive
- accessible.



This includes:

- other local governments
- the state government.



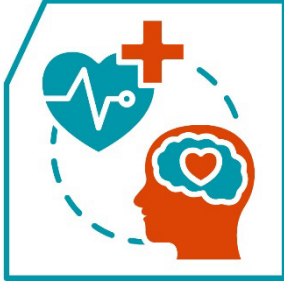
We will use **grants** to support inclusion programs.

A grant is money from the government to pay for important work that helps others.

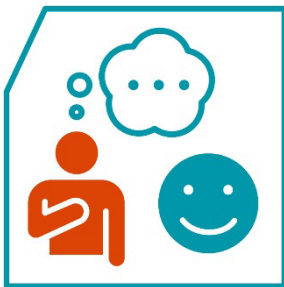


We will also make it easier for people with disability to apply for money for their programs.

## 4. Better health and wellbeing



We want health care services to be better connected with **mental health** services.



Your mental health is about how you:

- think and feel about yourself
- deal with things in your life
- manage your feelings.



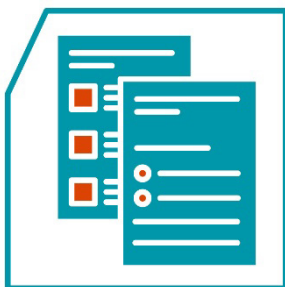
We want these services to be easy to:

- find
- use.

## What we will do



We will create accessible documents for our health and wellbeing plans.



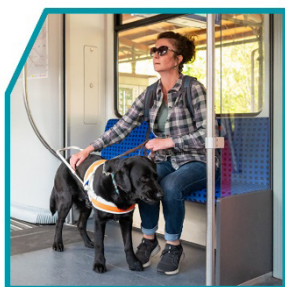
This includes using:

- Easy Read
- plain language.

We will speak up to make sure:



- health services are fair for people with disability



- public transport is accessible.



This includes telling the state government what we need to reach our goals.

## 5. Safety and the justice system



We want to make sure people with disability feel safe and protected by **emergency services**.



Emergency services help protect people and make them safe in dangerous situations.

For example, the police and firefighters.



We want to make sure people with disability feel safe and protected in the **justice system**.



The justice system makes sure people are treated fairly and follow the law.



The justice system includes:

- police
- courts
- prisons.

## What we will do



We will keep helping our community get ready for emergencies.

For example, a flood or bushfire.



We are working with the state government on the best ways to do this.



We will keep checking that information about emergencies on our website is accessible.



We will also look at how we can make our emergency plan more accessible.

## How we will make sure our plan works



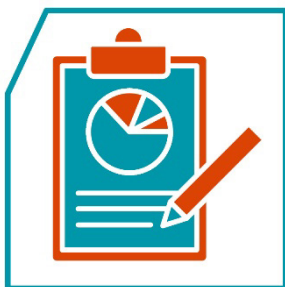
We have a group called the Ability Action Group.

The group will check how well we are following the plan.

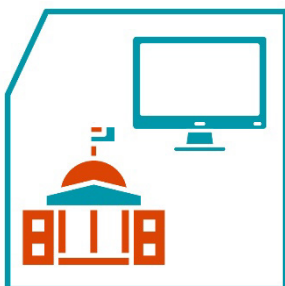


They will also:

- make sure the plan helps the community
- help us reach our goals.



We will also write a report about the plan every year.



We will share the plan:

- on our website
- with the state government.

# Word list

This list explains what the **bold** words in this plan mean.



## Accessible

When a community is accessible, it's easy to:

- find and use services
- move around.



## Culturally and linguistically diverse (CALD)

CALD people:

- come from different cultures and backgrounds
- speak languages other than English.



## Emergency services

Emergency services help protect people and make them safe in dangerous situations.

For example, the police and firefighters.



## Grant

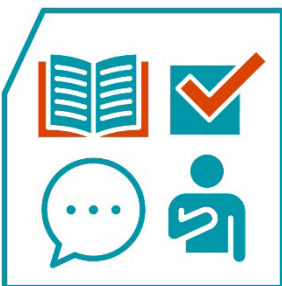
A grant is money from the government to pay for important work that helps others.



## Inclusive

When a community is inclusive, everyone can:

- take part
- feel like they belong.



## Intellectual disability

An intellectual disability affects how you:

- learn new things
- solve problems
- communicate
- do things on your own.

## Justice system



The justice system makes sure people are treated fairly and follow the law.

The justice system includes:

- police
- courts
- prisons.



## LGBTIQA+

The letters LGBTIQA stand for lesbian, gay, bisexual, transgender, intersex, queer or questioning and asexual.

The '+' is for people who are part of the LGBTIQA+ community but don't talk about themselves using a word from this list.



## Mental health

Your mental health is about how you:

- think and feel about yourself
- deal with things in your life
- manage your feelings.



## Volunteer

When you volunteer, you:

- work but you don't get paid
- do work that helps the community.

## Contact us



You can call us.

(08) 8539 1100



You can send us an email.

[council@murraybridge.sa.gov.au](mailto:council@murraybridge.sa.gov.au)



You can write to us.

PO Box 421  
Murray Bridge SA 5253



You can visit our website.

[www.murraybridge.sa.gov.au/services/your-community/disability-access-and-inclusion-plan](http://www.murraybridge.sa.gov.au/services/your-community/disability-access-and-inclusion-plan)



The Information Access Group created this Easy Read document using stock photography and custom images. The images may not be reused without permission. For any enquiries about the images, please visit [www.informationaccessgroup.com](http://www.informationaccessgroup.com).

Quote job number 6563.